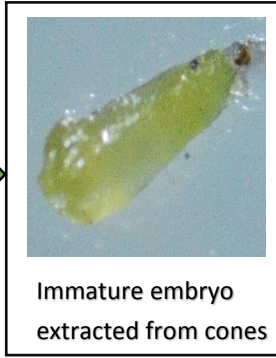
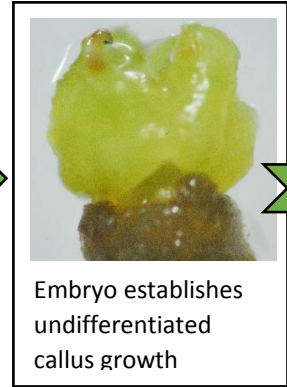


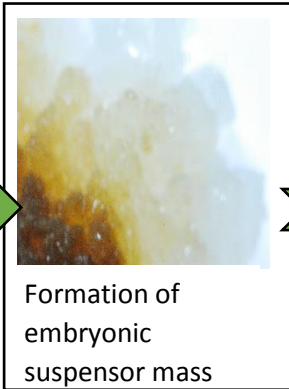
Cone from controlled cross pollination of superior plants



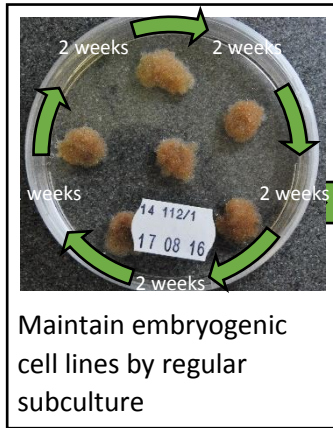
Immature embryo extracted from cones



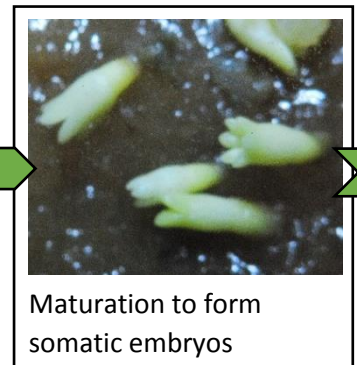
Embryo establishes undifferentiated callus growth



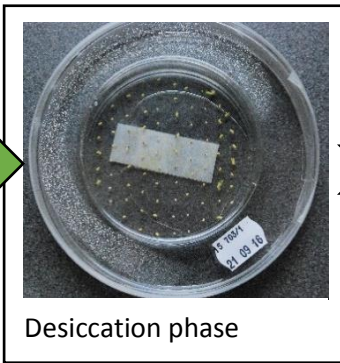
Formation of embryonic suspensor mass



Maintain embryogenic cell lines by regular subculture



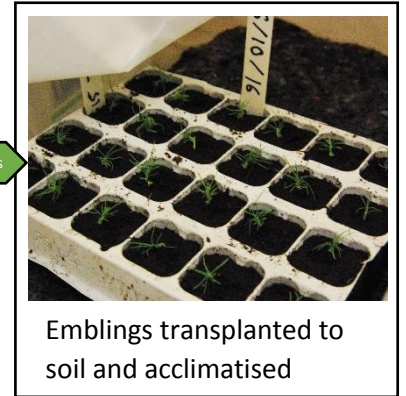
Maturation to form somatic embryos



Desiccation phase



Germinating embryos to form emblings/plantlets



Emblings transplanted to soil and acclimatised



Once acclimatised emblings transferred to outside and grown up to become stock plants